

Eco Preparation 1000 mm Work Table with Upstand - disassembled

ITEM # _____
MODEL # _____
NAME # _____
SIS # _____
AIA # _____



132845 (WTD1017N)

Work Table disassembled
with upstand, 1000mm

Short Form Specification

Item No. _____

Worktop in 304 AISI stainless steel with upturned edges and under panel made of sound deadening material. Rear upstand h=100mm. Square section legs 40x40mm in 304 AISI stainless steel with adjustable feet. Delivered disassembled.

Main Features

- The table can be ordered with the drawer of 400 mm or 600 mm (optional accessory): thanks to the design of the drawer, additional drawers can be added to the first single drawer to create chest of 2, 3 or 4 drawers based on customer's needs.
- Sturdiness, stability and reliability of table accurately tested.

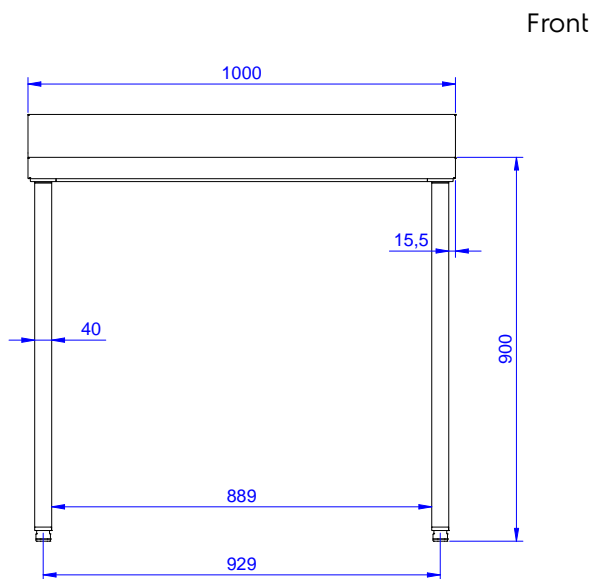
Construction

- Delivered in knock-down package.
- Constructed entirely in stainless steel to offer maximum durability.
- Wide range of taps are available to suit every need.

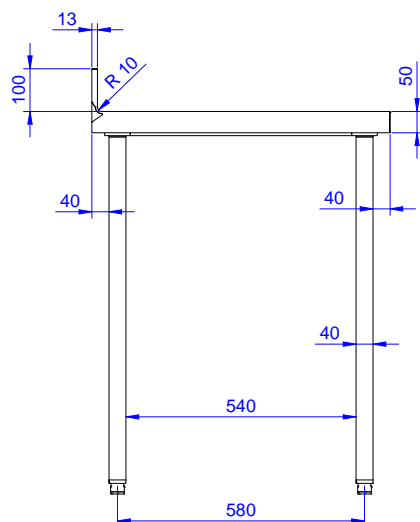
Optional Accessories

- Lower shelf for 1000 mm tables PNC 855144 ☐
and sinks and for 1600 mm
undercounter dishwasher sinks
- Set of 4 wheels (2 with brake) PNC 855150 ☐
d. 100mm for tables and sinks
(total height on wheels= 993
mm)
- 3-sided underframe for PNC 855151 ☐
1000mm tables

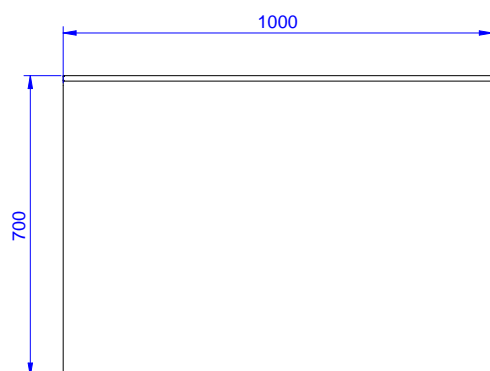
APPROVAL: _____



Front



Side



Top

Key Information:

| | |
|------------------------------|---------|
| External dimensions, Width: | 1000 mm |
| 132845 (WTD1017N) | |
| External dimensions, Depth: | 700 mm |
| External dimensions, Height: | 900 mm |
| Worktop thickness: | 50 mm |
| Worktop/Shelf radius: | 90° |
| Net weight: | 37 kg |